

**Supplementary information for the article:**

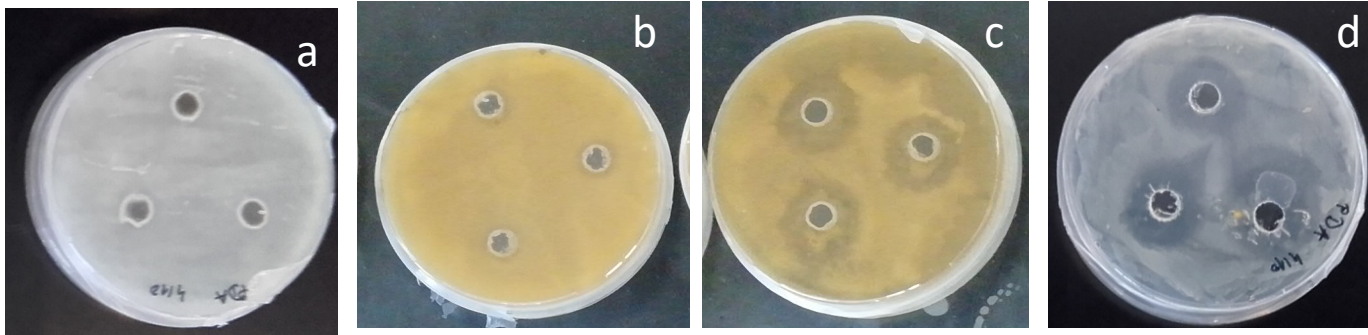
Kosanović, D.; Sheehan, G.; Grogan, H.; Kavanagh, K. Characterisation of the Interaction of *Pseudomonas Putida* and *Pseudomonas Tolaasii* with *Trichoderma Aggressivum*. *European Journal of Plant Pathology* **2020**, *156* (1), 111–121. <https://doi.org/10.1007/s10658-019-01867-z>.



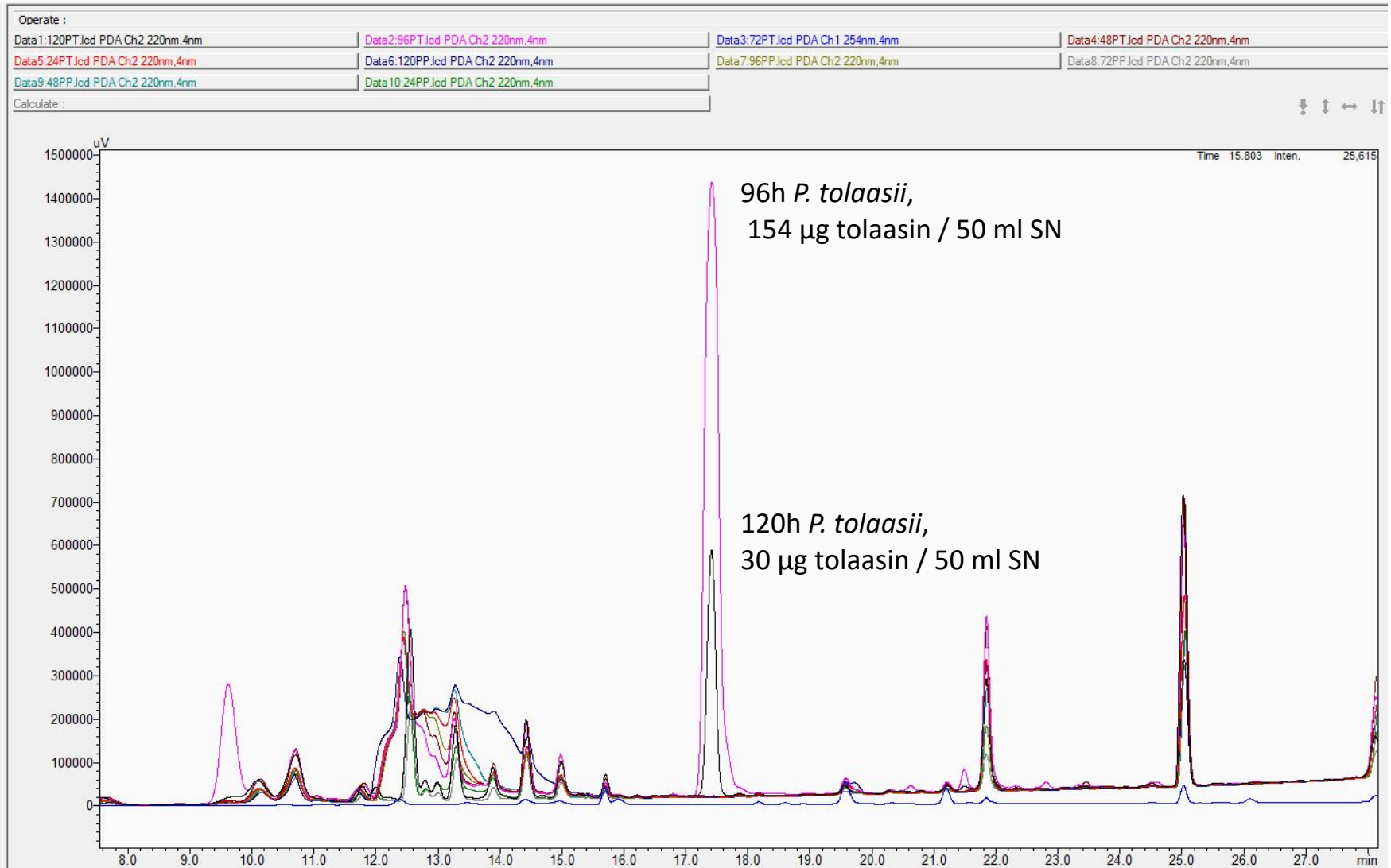
**Figure S1.** Pathogenicity assay on mushroom caps. Top of the pilei were inoculated with 20  $\mu\text{l}$  of *Pseudomonas tolaasii* ( $1 \times 10^{13}$  CFU  $\text{ml}^{-1}$ ). Sterile water was used as a negative control. Brown blotch on mushroom caps, 48h after inoculation (b), no blotch on a control (a).



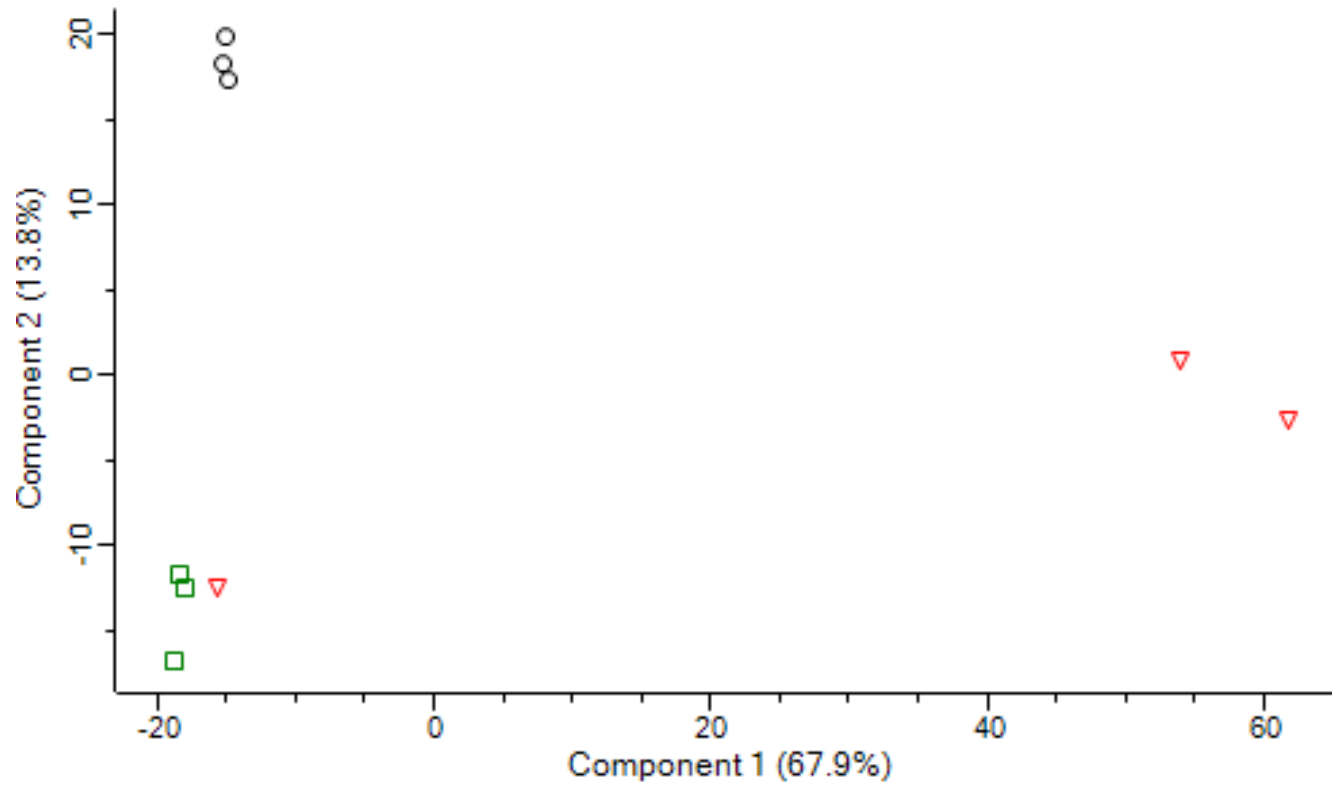
**Figure S2.** Zones of Inhibition due to *P. putida* (a, b) and *P. tolaasii* (c, d) supernatants on PDA (b, d) and ME (a, c) plates inoculated with with  $10^4$  *T. aggressivum* conidia and wells filled with 50  $\mu$ l of 96h SN, after 48h, 30 °C.



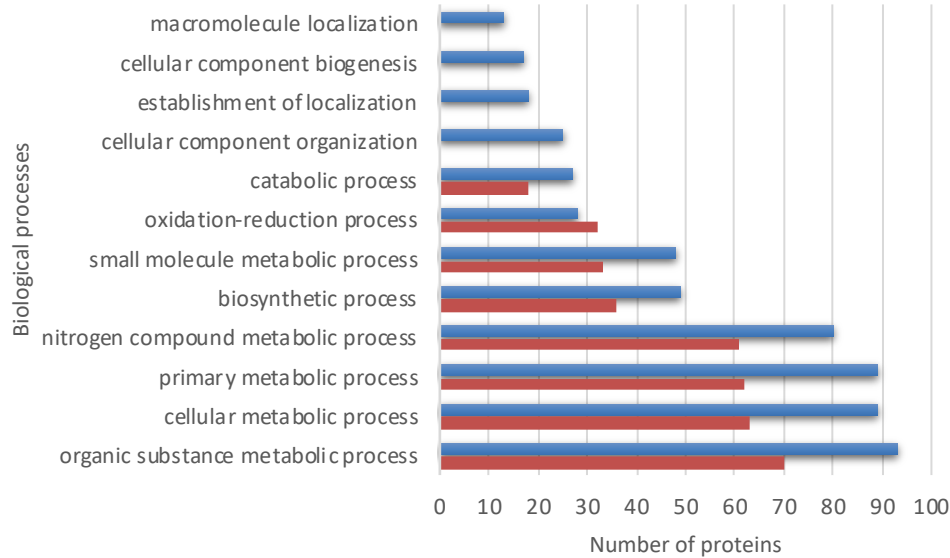
**Figure S3.** Comparison of superimposed *P. putida* and *P. tolaasii* supernatant chromatographs. Tolaasin Rt = 17.418 min. detected only in 96- and 120-hours *P. tolaasii* supernatants.



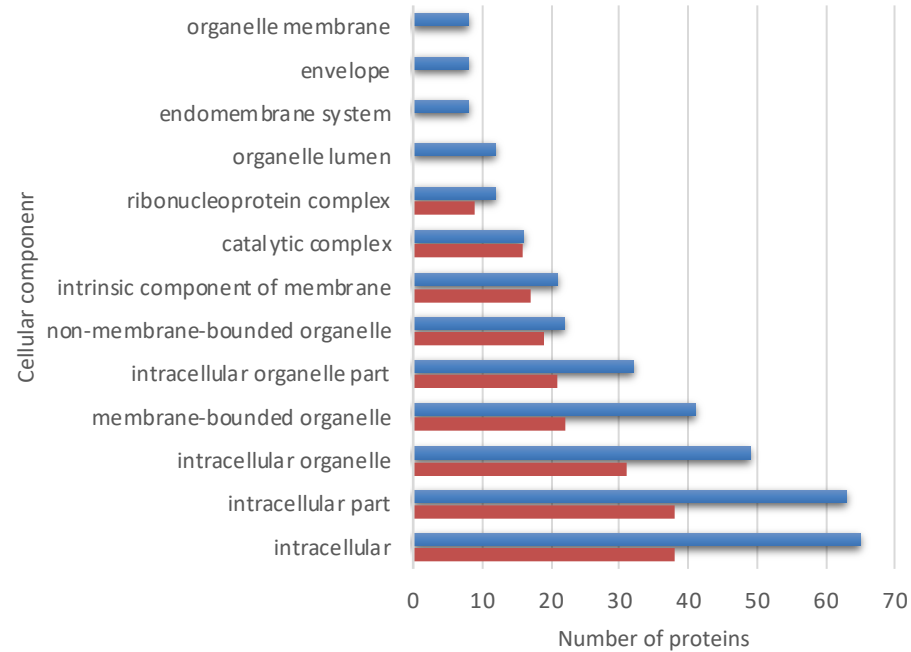
**Figure S4.** PCA analysis.  $\circ$  - *P. putida* group,  $\Delta$  - *P. tolaasii* group and  $\square$  - Control group.



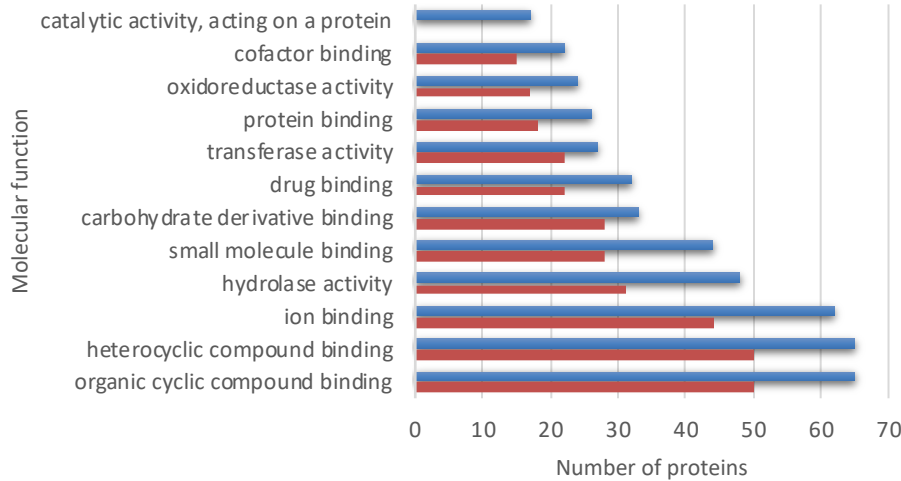
### Treatment with *P. putida/tolaasii*



### Treatment with *P. putida/tolaasii*



### Treatment with *P. putida/tolaasii*



**Figure S5.** Gene Ontology analysis by Blast2GO software tool. Biological process, molecular function, and cellular components significantly enriched within the proteome of *P. putida/tolaasii* treated *T. aggressivum*.